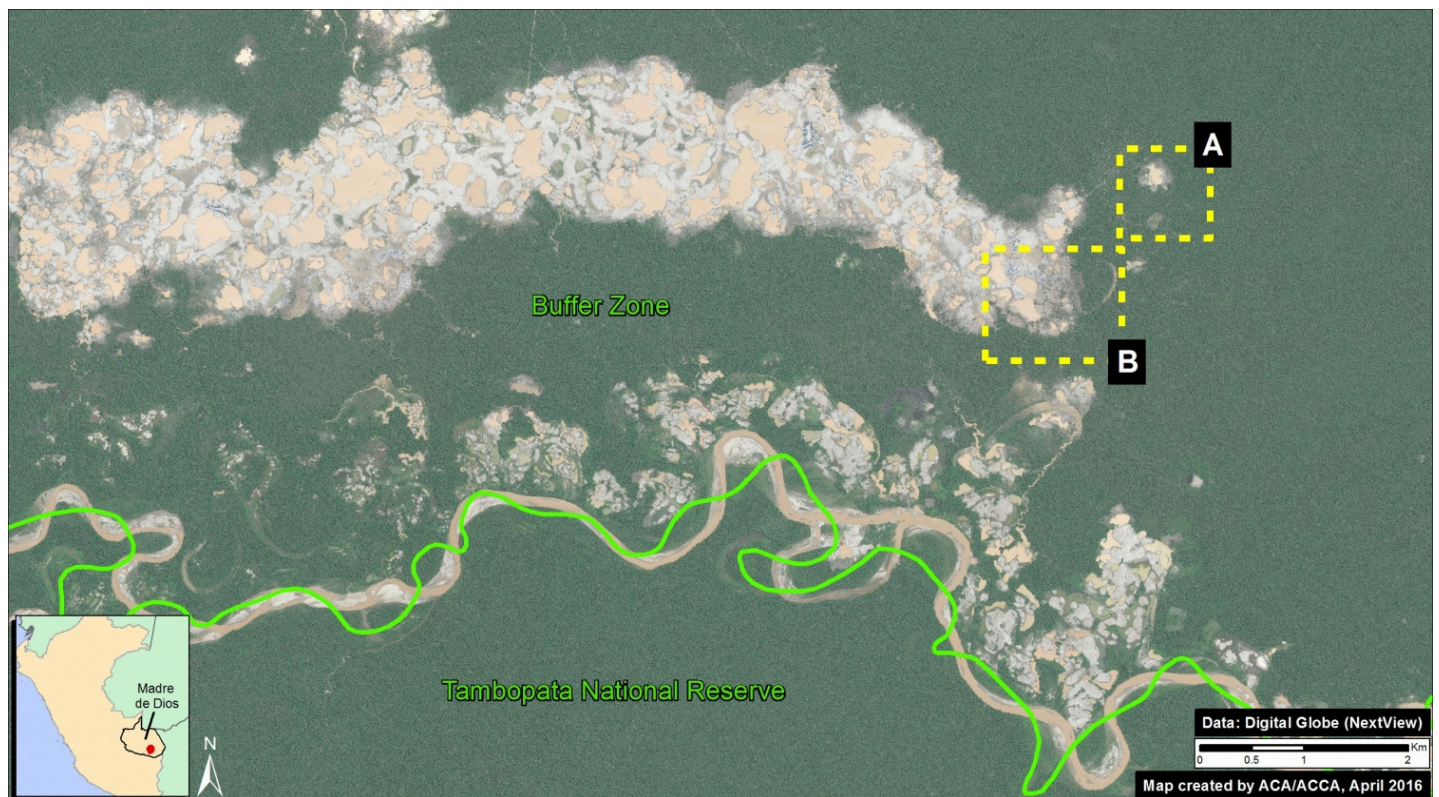


MAAP #31: Deforestation Continues Expansion in La Pampa (buffer zone of Tambopata National Reserve)

April 13, 2016

Donate

Legal gold mining deforestation continues to expand in **La Pampa**, an area located in the buffer zone of Tambopata National Reserve in the Madre de Dios region. Here, we present a series of **high-resolution** (0.5 m) images that clearly illustrate this expansion. **Image 31a** shows the large, expanding mass of deforestation in La Pampa (as of November 2015) in relation to the Tambopata National Reserve and its buffer zone. **Insets A and B** indicate the high-resolution zoom areas, where further below we show the rapid deforestation of 76 hectares (188 acres) between November 2015 and April 2016.



(https://www.maaprogram.org/wp-content/uploads/2016/04/DGApril_Max_english_v2.jpg)

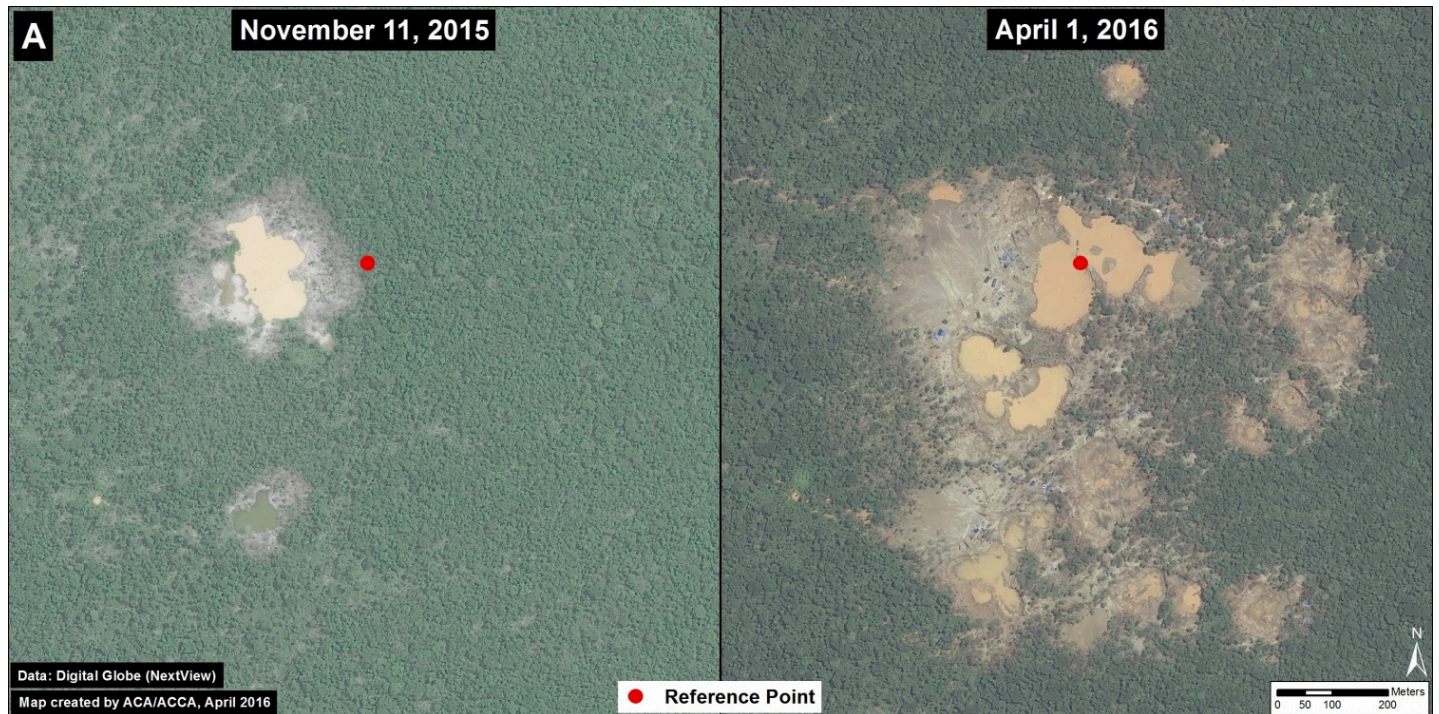
Franklin W. donated \$50 🎉
to Fighting Amazon Fires
🇺🇸 Pennington, United States

Donate

2 of Digital Globe (NextView).

Zoom A: Rapid Advance of Deforestation

Image 31b shows the expansion of deforestation (28 hectares) between November 2015 (left panel) and April 2016 (right panel) in the eastern section of La Pampa. The red dot indicates the exact same point in both images across time.

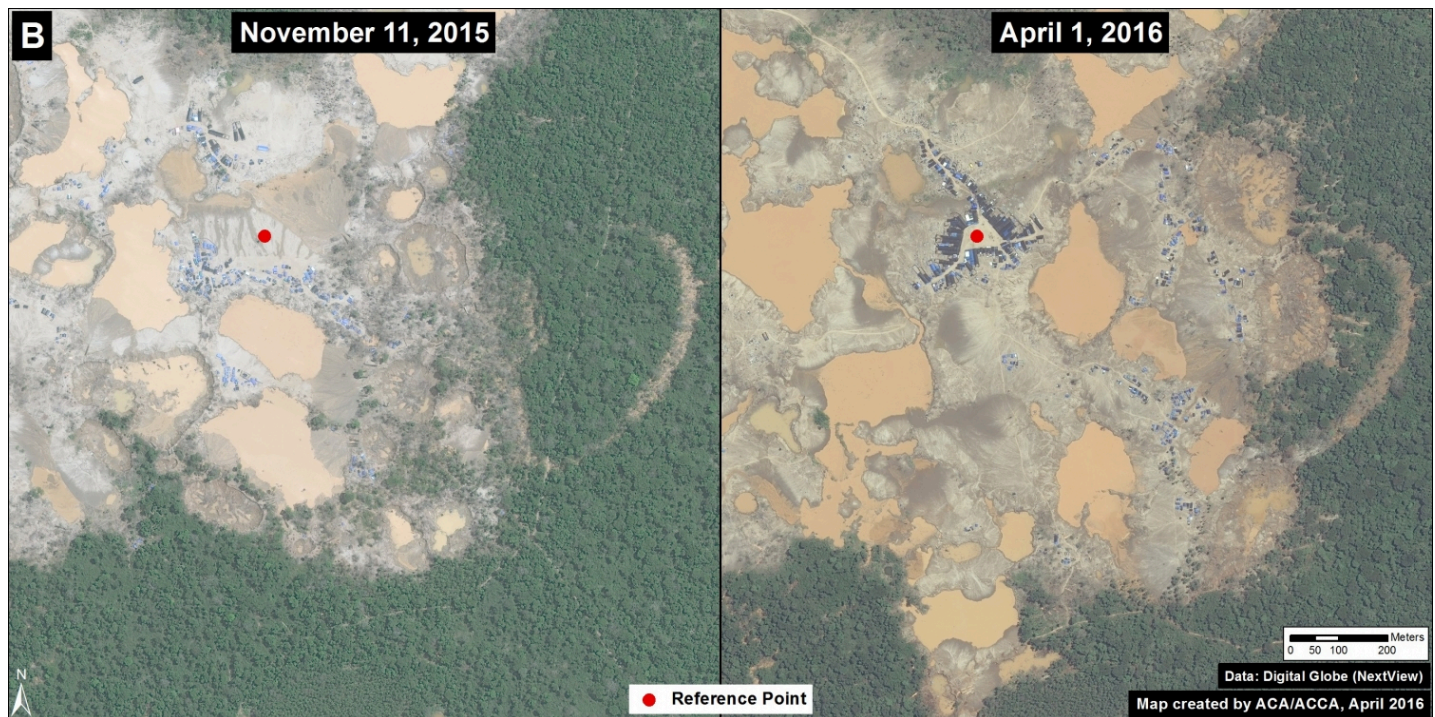


(https://www.maaprogram.org/wp-content/uploads/2016/04/DGApril_ZoomA_english_v2.jpg)

Image 31b. Data: WorldView-2 of Digital Globe (NextView).

Zoom B: Formation of a Large Camp

Image 31c shows the formation of a large mining camp between November 2015 (left panel) and April 2016 (right panel) in the eastern section La Pampa. The red dot indicates the exact same point in both images across time. The image also shows the deforestation of 48 hectares around the camp.



(https://www.maaprogram.org/wp-content/uploads/2016/04/DGApril_ZoomB_english_v2.jpg)

Image 31c. Data: WorldView-2 of Digital Globe (NextView).

Citation

Finer M, Olexy T (2016) Deforestation Continues Expansion in La Pampa (buffer zone of Tambopata National Reserve). MAAP: 31.
