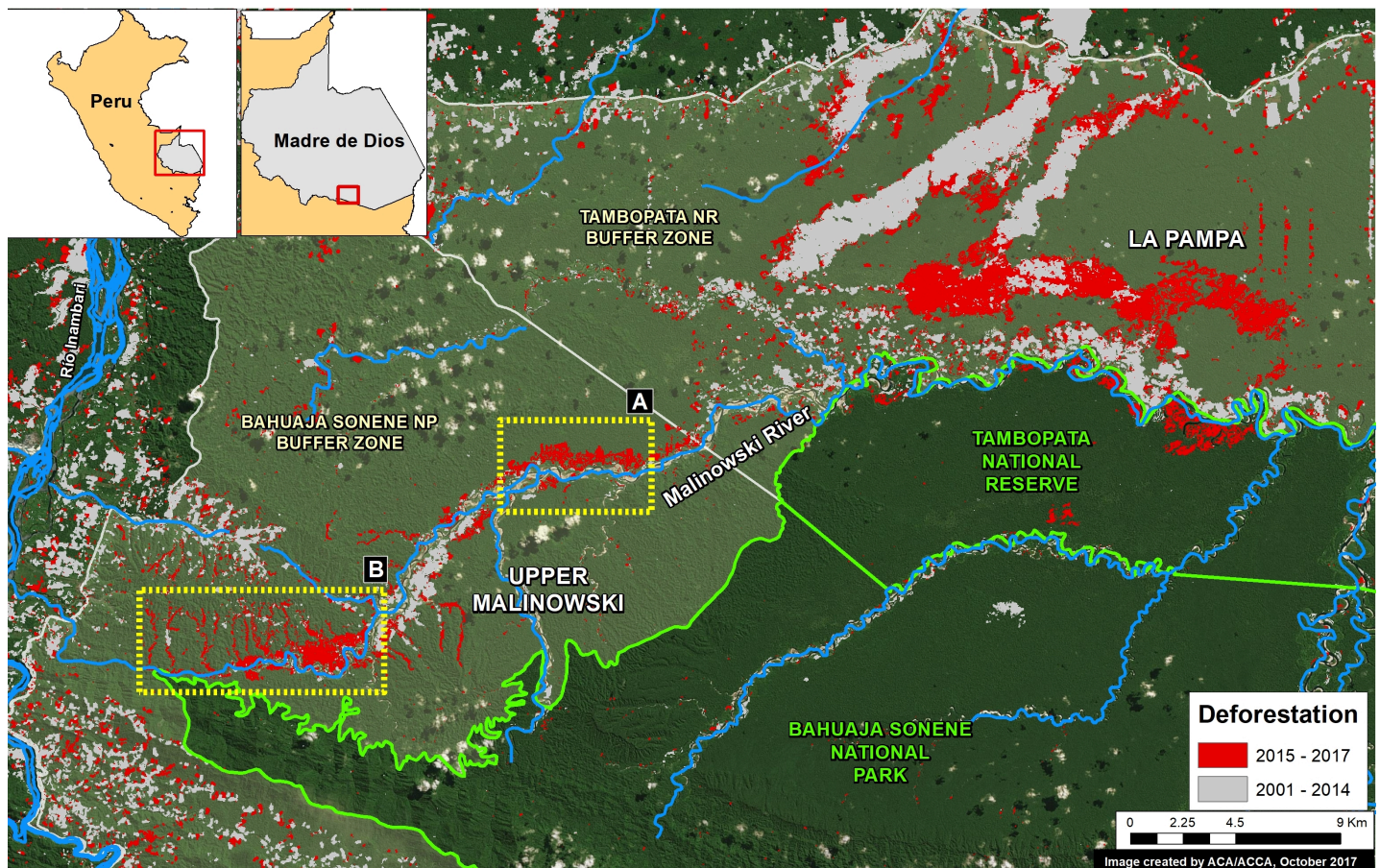


# MAAP #72: New Gold Mining Deforestation Zone in Peruvian Amazon: the Upper Malinowski (Madre de Dios)

October 30, 2017

In a series of previous reports (MAAP # 60 ([https://www.maaprogram.org/2017/buffer\\_tambopata\\_2017/](https://www.maaprogram.org/2017/buffer_tambopata_2017/))), we have described the dire **gold mining deforestation** in the southern Peruvian Amazon, most notably in the area known as “La Pampa” (see Base Map). However, over the past 3 years another critical area has emerged in the region: the **Upper Malinowski**. This area is located near the headwaters of the Malinowski River, upstream of La Pampa (see Base Map).

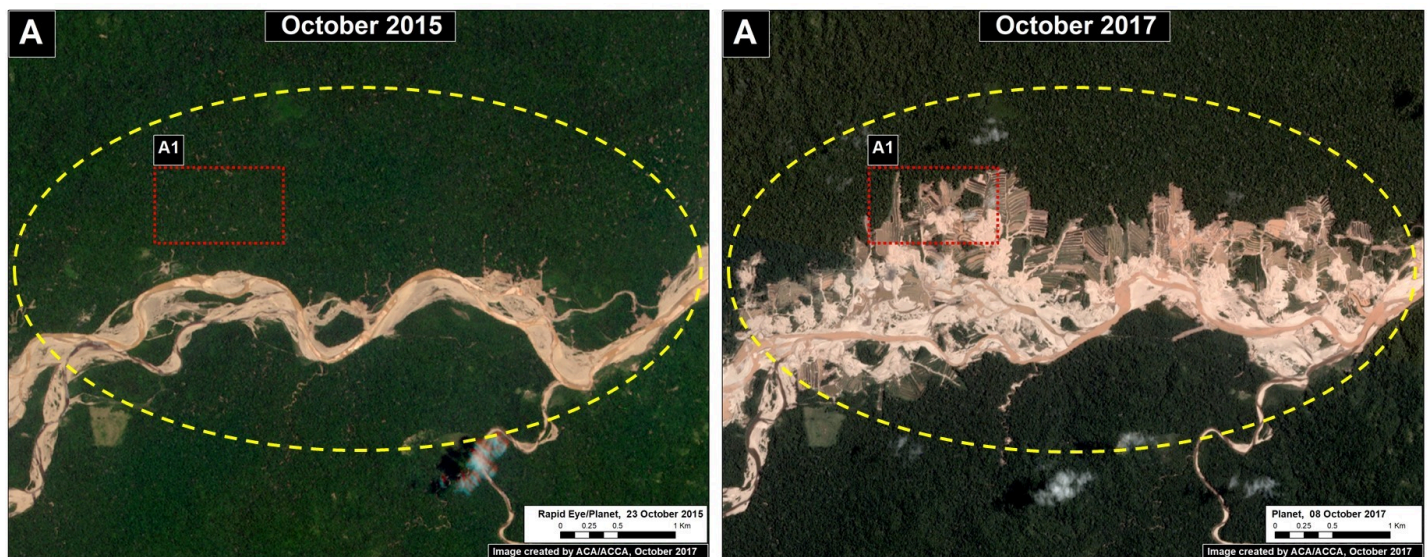
Here, we show **satellite images** of the rapid advance of gold mining deforestation in two sectors of the upper Malinowski. In total, we document the deforestation of **3,880 acres** (1,570 hectares) between 2015 and 2017 inside the buffer zone of the Bahuaja Sonene National Park.





## Upper Malinowski – Sector A

Sector A has experienced the rapid deforestation of 704 acres (285 hectares) over just the past 2 years. **Figure 72a** shows satellite images (courtesy of the company Planet) of this rapid mining deforestation between October 2015 (left panel) and October 2017 (right panel). In addition, we show a **very high resolution image** (0.32 meters) over an active part the sector (Inset A2); note the visible presence of mining camps and organized mining pits. There are no mining concessions in this sector, thus all mining activity is illegal.



([https://www.maaprogram.org/wp-content/uploads/2017/10/MAAP\\_Malinowski\\_del\\_2017\\_C\\_m\\_v1\\_en.jpg](https://www.maaprogram.org/wp-content/uploads/2017/10/MAAP_Malinowski_del_2017_C_m_v1_en.jpg))

Image 72a. Data: Planet



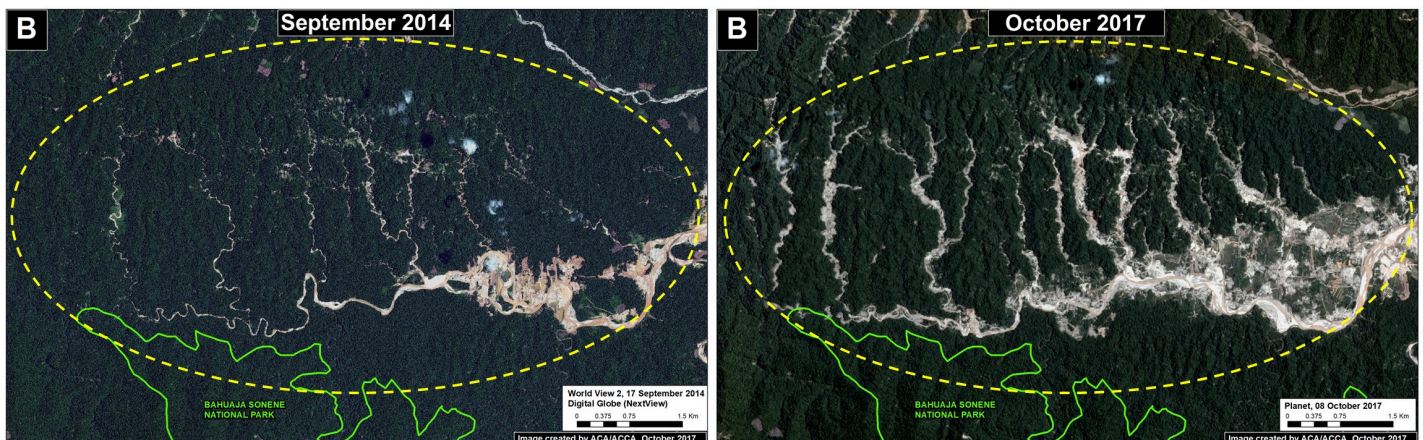
**A1****October 2017**

([https://www.maaprogram.org/wp-content/uploads/2017/10/MAAP\\_Malinowski\\_del\\_2017\\_D\\_v1\\_en.jpg](https://www.maaprogram.org/wp-content/uploads/2017/10/MAAP_Malinowski_del_2017_D_v1_en.jpg))

*Very High Resolution Zoom. Data: DigitalGlobe (Nextview)*

## Upper Malinowski – Sector B

Sector B has experienced the deforestation of 3,175 acres (1,285 hectares) over the past 3 years. **Figure 72b** shows satellite images (from the company Planet) of the mining-caused forest loss between 2014 (left panel) and 2017 (right panel).



([https://www.maaprogram.org/wp-content/uploads/2017/10/MAAP\\_Malinowski\\_del\\_2017\\_B\\_m\\_v1\\_en.jpg](https://www.maaprogram.org/wp-content/uploads/2017/10/MAAP_Malinowski_del_2017_B_m_v1_en.jpg))



## Coordinates

Sector A:

-13.052761, -70.164371

Sector B:

-13.120311, -70.268055

---

## References

Planet Team (2017). Planet Application Program Interface: In Space for Life on Earth. San Francisco, CA. <https://api.planet.com> (<https://api.planet.com/>)

---

## Citation

Finer M, Novoa S (2017) New Gold Mining Deforestation Zone: Upper Malinowski (Madre de Dios, Peru). MAAP: 72.

---